



Teton Steel

www.tetonsteelidaho.com

Phone: 208-528-6600

Fax: 208-528-6630

Address: 2380 E 24th N

Idaho Falls, ID 83401



Zincalume*



Weathered Copper



White*



Ivory



Parchment*



Light Stone*



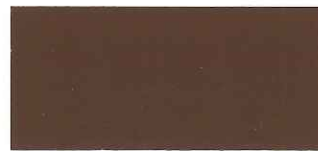
Beige*



Hickory Moss*



Desert Brown



Medium Brown*



Dark Brown



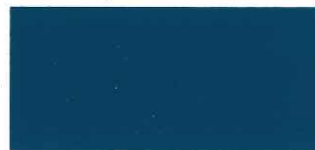
Light Gray*



Dark Gray



Sky Blue



Dark Blue



Red



Burgundy



Medium Green



Dark Green*



Forest Green



Black



Copper Penny***



Sedona Rust***

*** Premium color. * Also available in 26 Ga.



COLOR	28 GAUGE				26 GAUGE		24 GAUGE	
	3' Tuf Rib	3' Delta Rib	2' Delta Rib	2 1/2" Corrugated	3' PBR	Standing Seam	7/8" Corrugated	Standing Seam
Zincalume	●	●	●	●	●	●	●	●
White	●	●	●	●	●	●		
Ivory	●	●						
Parchment	●	●	●	●	●			
Light Stone	●	●	●	●	●			
Beige	●	●	●	●	●			
Hickory Moss	●	●			●			
Weathered Copper	●	●				●		
Desert Brown	●	●	●	●				
Medium Brown	●	●	●	●	●	●		
Dark Brown	●	●	●	●		●		
Light Gray	●	●	●	●	●	●		
Dark Gray	●	●	●	●	●	●		
Dark Blue	●	●	●	●				
Red	●	●	●	●		●		
Brownstone	●	●						
Burgundy	●	●						
Medium Green	●	●						
Dark Green	●	●	●	●	●	●		
Forest Green	●	●	●	●		●		
Black	●	●						
Copper Penny	●	●				●		
Sky Blue	●	●				●		
Heavy Ga. Color Chart	Contact Teton Steel for Heavy Gauge Color Chart						●	●

MATERIAL SPECS	28 GAUGE	26 GAUGE	24 GAUGE
STEEL YIELD STRESS	80,000 PSI (Grade E)	80,000 PSI (Grade E)	50,000 PSI (Grade D)
GALVALUME STEEL GAUGE	AZ-55	AZ-55	AZ-55 (Acrylic), AZ-50 (Painted)
PAINT SYSTEM	DURACOAT™	DURACOAT™	Valspar®, Coolr (Kynar 500®/Hylar 5000®)
WARRANTY	40-year/Cool Roof Paint	40-year/Cool Roof Paint	35-year/Energy Star Partner®

