



TERRA COTTA



AGED COPPER



SOLAR WHITE +



SANDSTONE +



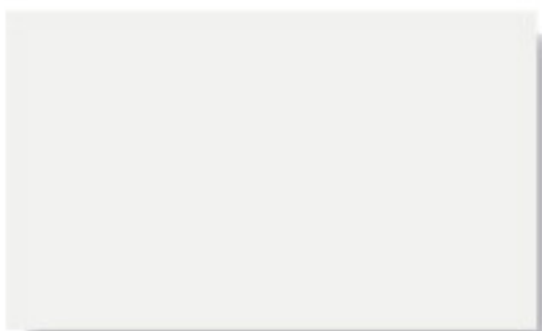
SURREY BEIGE



COLONIAL RED +



PATINA GREEN



REGAL WHITE +



ASH GRAY +



SIERRA TAN +



REGAL RED *



HEMLOCK GREEN *



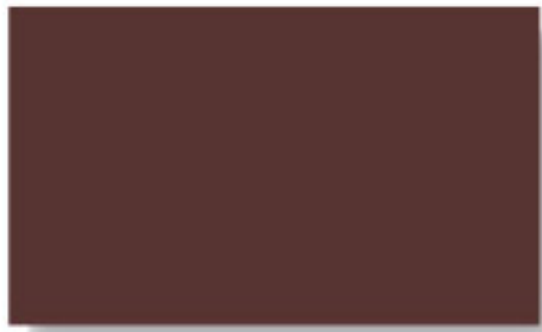
STONE WHITE



DOVE GRAY



MEDIUM BRONZE +



BURGUNDY *



HARTFORD GREEN * +



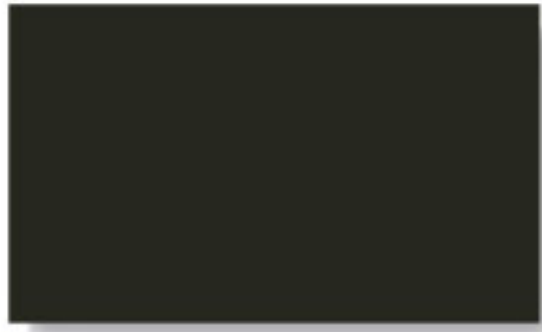
SLATE BLUE



SLATE GRAY +



MANSARD BROWN +



MATTE BLACK +



EVERGREEN +



REGAL BLUE * +



CHARCOAL GRAY +



DARK BRONZE +

Metallic Colors



SILVER *



COPPER *



CHAMPAGNE *



PRE-WEATHERED *
GALVALUME®



ACRYLIC COATED
GALVALUME®

Non-Painted

Weathered Colors



GALV-TEN™ RAW *



COPPER-TEN™ RAW *



COR-TEN AZP® RAW *



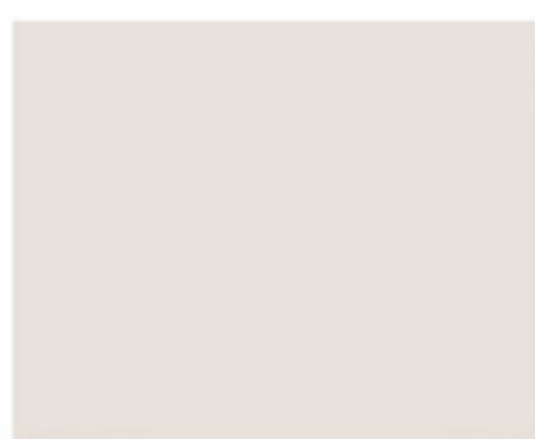
VINTAGE®

* Available at a slight price premium.

+ Available in 26ga SMP

* Also available in Robust.

Colors shown are matched as accurately as possible, but may vary slightly from finished product. These rich and vibrant colors are produced with either Kynar 500® or Hylar 5000® resins, which provide superior color retention and allow Sheffield Metals to offer non-prorated coating warranties for most applications. Coating warranty varies for Regal Red, Matte Black, Copper, Champagne, Silver, and Pre-Weathered Galvalume. Steelscape's Vintage carries a 20 year Finish Warranty. Please contact your representative for more information.



REGAL WHITE



DOVE GRAY



SLATE GRAY



ASH GRAY



DARK GRAY



COLONIAL RED



EVERGREEN



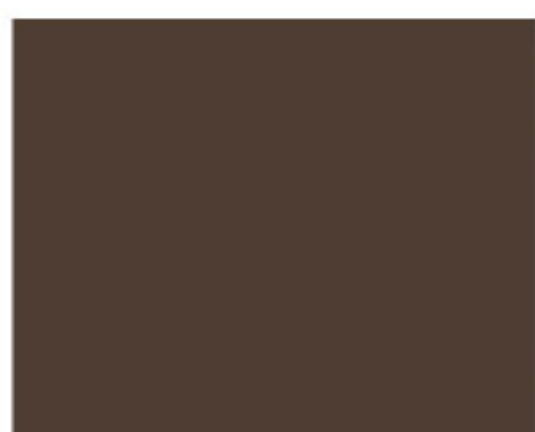
TERRA COTTA



SANDSTONE



SIERRA TAN



MANSARD BROWN



MEDIUM BRONZE



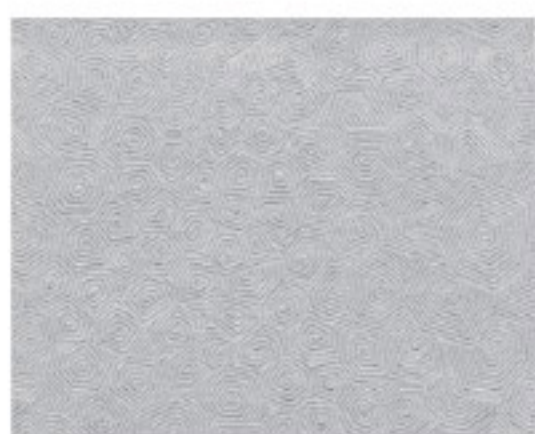
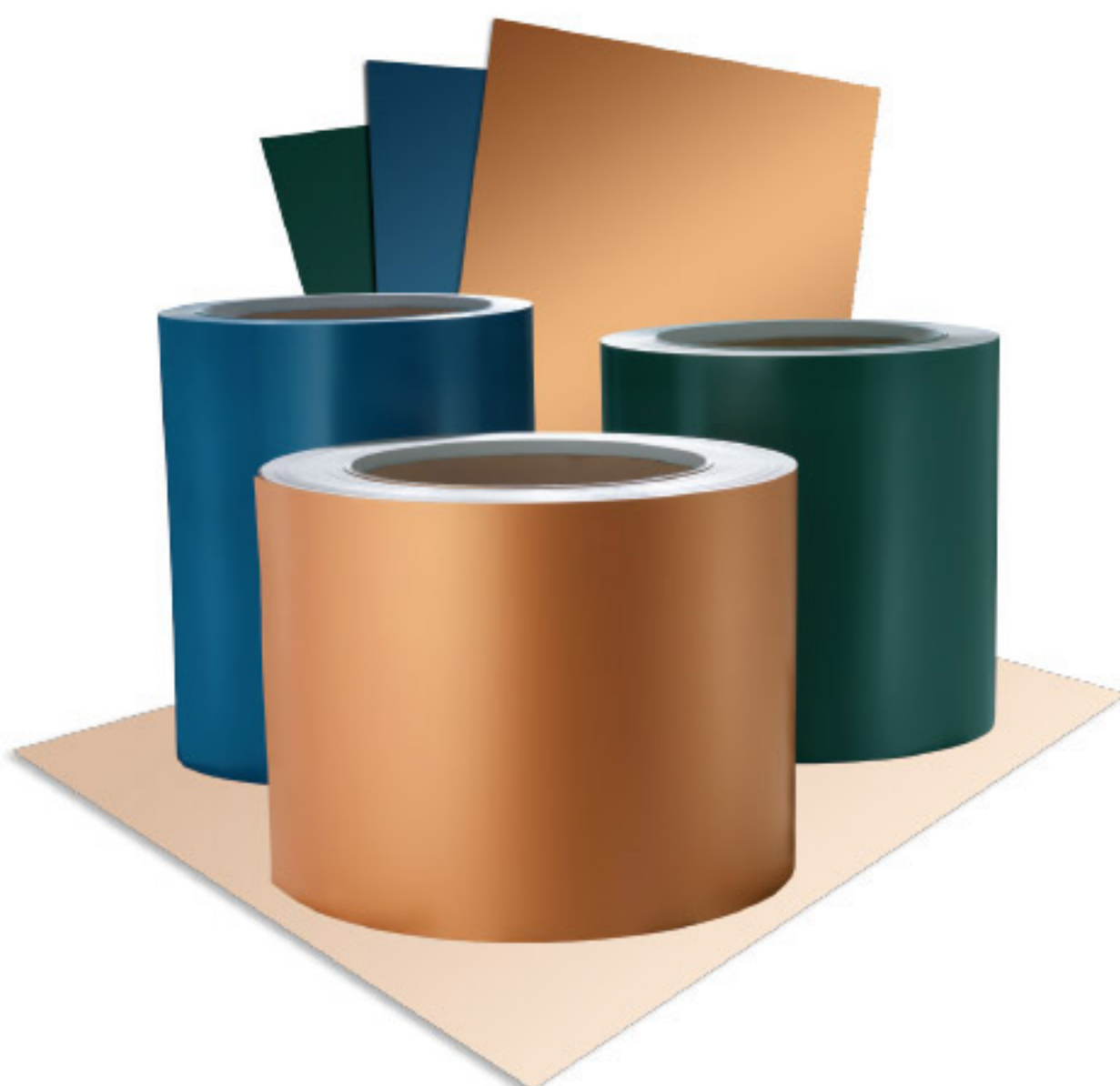
DARK BRONZE



BLACK



ANTIQUE

Metallic
COPPER **Non-Painted
ACRYLIC COATED GALVALUME®

COOLR® Makes A Roof Cooler!

COOLR® is a family of sustainable, energy efficient roofing products comprised of 70% Kynar 500® or Hylar 5000® pre-painted metal and acrylic coated Galvalume®. COOLR® is available in a wide variety of colors, gauges, widths and substrates for low and steep slope applications.

COOLR® Is:

- **Highly Reflective—**
Available with emissivity as high as 90% and reflectivity exceeding 25%.
- **Exceptionally Durable—**
Proven to last over 30 years with minimal maintenance and is offered with a non-prorated warranty for most applications. Paint colors retain 95% of their initial reflectance and emittance over time.
- **Made of Metal That Has Recycled Content & Is Recyclable—**
Environmentally friendly, typically having a minimum recycled content of 25%. 100% recyclable at the end of a long, useful life.
- **Available Quickly—**
Stocked in volume for fast delivery.

* Available at a slight price premium.

* Copper is a standard gloss product.

Colors shown are matched as accurately as possible, but may vary slightly from finished product. Please contact your representative for more information.

SPEC DATA

1. PRODUCT NAME

COOLR Kynar 500® / Hylar 5000®
Coated Galvalume Steel or Aluminum,
Architectural Sheet Metal, Flashing, Roofing

2. MANUFACTURER

Sheffield Metals International

5467 Evergreen Parkway
Sheffield Village, OH 44054
Phone: 800-283-5262
Fax: 440-934-8506

3. PRODUCT DESCRIPTION

Structural Grade 50, extra smooth,
Galvalume steel or Aluminum, coated with
70% Kynar 500 / Hylar 5000 fluorocarbon
coating, 1.0 ± 0.1 mil total dry film thickness
including primer. The reverse side is coated
with a primer and off white backer with a
total of .5 mil dry film for additional
protection. A strippable film is available
upon request to protect the finished surface
during shipping, handling and fabrication.
**(The protective film must be removed
immediately after installation.)**

Basic use COOLR is manufactured for use
in general building applications, such as
copings, gravel stops, flashings, mansards,
fascia's, soffits, standing seam, batten seam
and flat seam roofing applications.

Limitations: Because COOLR is a
prefinished material, care must be exercised
during fabrication and erection to avoid
damage to the surface. The performance of
the material in the field depends substantially
on the integrity of the paint film, and in
Galvalume steel, on the underlying coating
of aluminum-zinc being intact. Care must
be taken to avoid scratching or marring the
finish. Therefore, COOLR should not be used
in areas of high abrasion or where it will
be subject to mechanical damage.

Composition and Materials:

COOLR consists of Structural Grade 50
Galvalume steel of prime quality
manufactured per ASTM A 792 or Aluminum
Association specification sheet, alloy and
temper 3003-H14 or 3105 H-14, as
manufactured per ASTM B 209, coated
with 70% Kynar 500 / Hylar 5000
(polyvinylidene fluoride resin) fluorocarbon
applied over an appropriate primer. An
exterior off white backer coat is applied to
the reverse side for additional protection.

Sizes: Galvalume steel is available in
24 GA, 48" sheet and in 48", 44", 40",
24", 22", 20" and 16" standard coil widths.
22 GA. bare steel is available to paint in
44" and 48" coils. Galvalume steel is
available in 26 GA in 48" sheet and in
48", 40", 24", 20" and 16" standard
coil widths. Aluminum is available in
.032 48" sheet and 48", 40", 23.75",
20" and 15.833" standard coil widths.
Aluminum is available in .040 and
.050 48" sheet and 48", 23.75" and
15.833" standard coil widths.

Colors: There are 44 standard colors:
Aged Copper, Ash Gray, Burgundy,
Champagne Metallic, Charcoal gray,
Colonial Red, Copper Metallic, Dark Bronze,
Dove Gray, Evergreen, Hartford Green,
Hemlock Green, Mansard Brown, Matte
Black, Medium Bronze, Patina Green,
Pre-weathered Galvalume, Regal Blue, Regal
Red, Regal White, Sandstone, Sierra Tan,
Silver Metallic, Slate Blue, Slate Gray, Solar
White, Stone White, Surrey Beige, Terra
Cotta, Cor-Ten AZP® Raw, Copper-Ten™ Raw,
Galv-Ten™ Raw.

26 GA Low Gloss Colors: Antique Black,
Black, Burgundy, Colonial Red, Dark Bronze,
Dark Gray, Evergreen, Regal White, Seal
Brown, Sierra Tan, Slate Gray, Terra Cotta.
Custom colors are available in both steel
and aluminum.

Finish: Smooth, dull matte, low to medium
gloss, depending on color.

Applicable Standards: ASTM A 792
structural quality steel, sheet and coil, coated
(Galvalume) by the hot dipping process
or ASTM B 209 Aluminum sheet 3105-H24
alloy and temper.

4. KYNAR PAINT TECHNICAL DATA

- ASTM D 968, Method A - Abrasion /
Falling Sand
- ASTM D 4587 & ASTM G 154 -
Accelerated Weathering
- ASTM D 3359, Method B - Adhesion of
Coating by Tape Test
- ASTM D 1308 - Chemical Pollution
- ASTM B 117 - Salt spray
- ASTM D 5894 - Cyclic Salt Fog UV
- ASTM G 7 - Exterior Durability
- ASTM D 4145 - Flexibility T-Bend
- ASTM D 522 - Formability



- ASTM D 4585 - Humidity, Cleveland
Condensing
- ASTM D 2247 - Humidity
- ASTM D 2794 - Impact Resistance
- ASTM D 3363 - Pencil Hardness
- ASTM D 523 - Specular Gloss
- ASTM E 84 - Surface Burning
- ASTM D 1735 - Water Resistance of
Coating using Fog Apparatus
- ASTM D 822, G 152 & G153 -
Weatherometer

Test results available upon request.

5. INSTALLATION

Install using Sheffield Metals International's
recommended installation details.

6. WARRANTY

A 35 Year, non-prorated paint warranty
covering color fade, chalking and film
integrity is available at no additional cost
and is issued on a per project basis upon
request. A 25 Year 6 month, Galvalume
warranty covering corrosion is available at
no additional cost and is issued on a per
project basis upon request. A 5 - 35 year
Standard Weathertight Warranty and
a 10 - 35 year No Dollar Limit Warranty is
available for a fee on a per project basis.
A Weathertight Warranty application
must be submitted to Sheffield Metals
Internationals' Technical Department for
approval prior to installation of the
roof system, warranty terms are in
5 year increments.